



Children's World

"preparing today's children for tomorrow's world."

(License no.: W/TI-003/2017)

Information Pack for the School Year



Contents

Section		Page
Section 1	About us	3 - 5
Section 2	Our services	6 - 7
Section 3	Education approach	8 - 15
Section 4	SOP measures	17 - 18
Section 5	Special events	19 - 20
Section 6	Contact us	21 - 22

Confidentiality Statement

This document is the property of Taska Children’s World (“TCW”) which contains images and proprietary information of TCW. The reproduction and/or redistribution of this document in any manner or medium is strictly prohibited without authorisation from TCW.



About us

Taska Children's World



Since 1997



Founder, Mdm. Kok Hua Liang



Montessori and Thematic Curriculum



Sri Petaling, KL

Taska Children's World is a national accredited private pre-school that provides early child development and education through the *Montessori* curriculum methods.

In partnership with parents, staff and the communities, we serve to build the right foundation for future learning and in life.

We believe that every child deserves a better tomorrow and we are dedicated to making that difference. Hence our tagline,

“preparing today's children for tomorrow's world.”



Our principles of Early Year Foundation Stage



“Education is a natural process carried out by the child and is not acquired by listening to words but by experiences in the environment.”

– Dr. Maria Montessori (1870-1952)

Children are by nature inquisitive. The ever-present sense of curiosity is what drives the children’s desire to know the unknown.

In the early years, children’s brain are mouldable to a myriad of possibilities. The key is for practitioners (i.e. teachers) and parents to recognize these critical tenets and provide guided opportunities for them to freely observe the world around them and make self-conclusion out of it. This, is **real learning**. Hence, *Taska Children’s World* encourages these principles in the early year foundation stage:

- **Every child is unique** - Every child is unique and they are constantly learning. They are also inherently capable of resilience, self-confidence and self-assured.
- **Positive relationship** - Positive relationship helps to reinforce learning by encouraging the child to attempt or perform a task. This eventually develops confidence and independence.
- **Enabling environments** - A conducive environment for a child to develop and learn effectively is important. His experiences respond to his individual needs.
- **Learning and development** - Children learn and develop in many distinct ways, at different pace. The above principles collectively provides education and care for all children in their early years.



Our services

Commitment in our services

Our team is committed to assure *Quality and Excellence* in our services:

- **Montessori and Thematic programme** for children ages 2 to 4 years old
- **KSPK programme** for children ages 5 to 6 years old
- **Parental collaboration / consultation** as part of your child's learning and development progress
- **Reading programme** specially selected for your child's language and literacy development
- **Thematic and Project approach** to our curriculum for building your child's learning foundation
- **After-school child care**



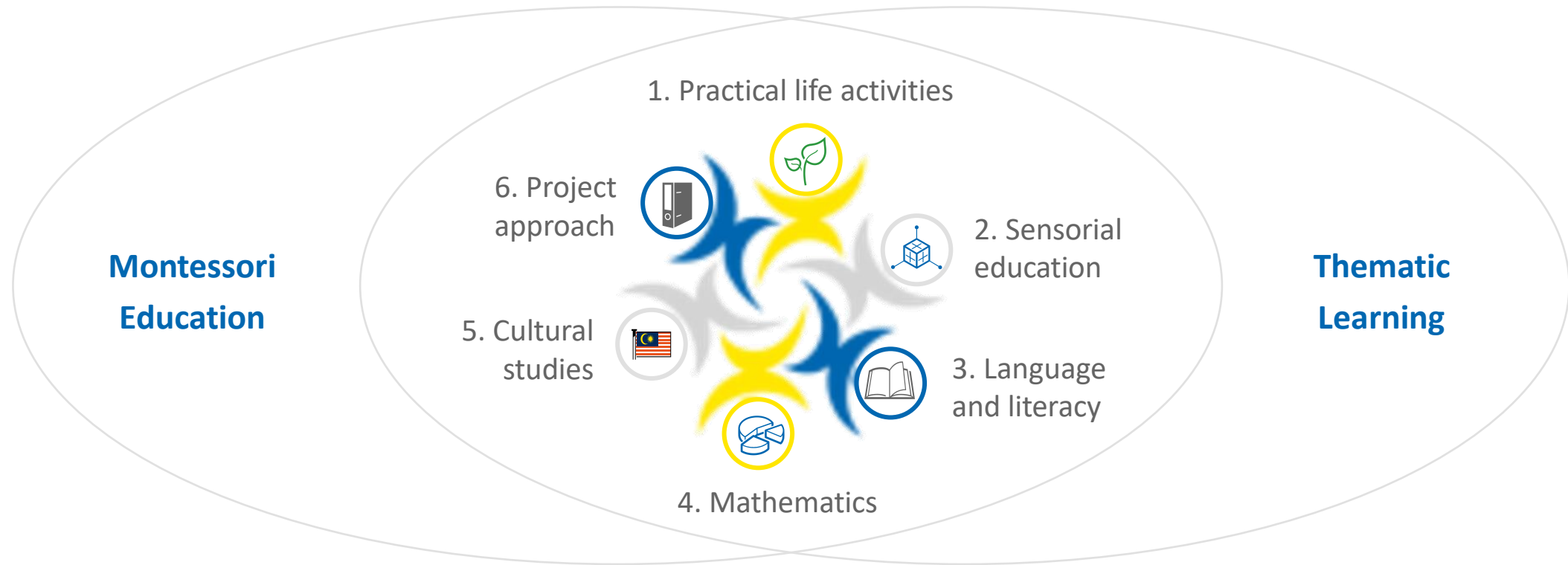
KSPK: Kurikulum Standard Prasekolah Kebangsaan



Education approach

Our education pillars

Taska Children's World believes in building the right foundation for children's learning with **education pillars** through the combination of **two core curriculums** i.e. **Montessori Education** and **Thematic Learning**, illustrated as follow:



Among others, our education approach underpins the **PERMATA national curriculum** framework, **learn through play** approach as well as to inculcate in our children the three **effective learning (3E) styles** i.e. *to explore, to experiment and to experience*.

1. Practical life activities



At the early stage of *Montessori*, children are encouraged to **develop important life skills** to develop their independence, concentration, co-ordination, self-esteem, social awareness, intellectual development and social skills. Through these experiences, the child develops his/her fine and gross motor skills. The several areas of practical life activities are as follow:

Preliminary activities

Develop concentration, eye-hand co-ordination



Elementary movements

Sitting in a group, learn to take turns, learn to queue etc.



Classroom skills

Writing, colouring, using a glue, etc.



Development of social skills



Care for self



Care of environment



Fun with cooking



2. Sensorial education



First learning is through the senses. Hence *Montessori* approach introduces a range of well thought-out exercises to refine a child's **brain development** through their senses i.e. sight, hearing, smell, touch and taste. Sensorial education enhances a child's observation and discrimination skill, broadening his vocabulary and contributes their understanding of formal education concepts.

Visual (sight)



Auditory (hearing)



Olfactory (smell)



Gustatory (taste)



Tactile (touch)



3. Language and literacy



The *Montessori* method is based on a carefully structured **phonics approach** used to develop a child's listening, reading and writing skills. Besides the English language, children are also encouraged with other languages such as Bahasa Malaysia and Chinese.

Montessori phonics



Reading programme



4. Mathematics



The *Montessori* approach encourages a child's understanding of relationships in the environment and the ability to express them in numerical terms. This foundation prepares a child's mathematical concepts such as addition, subtraction, multiplication and division.

Rote counting



Concept of sequence and quantities



Geometry



Mathematical concept (e.g. addition, subtraction)



5. Cultural studies



The *Montessori* classroom encourages children to use materials to build their understanding of countries, cultures, geography as well as the discovery of science and nature.

Countries, geography, art & craft, celebrations, etc.



Science and nature discovery



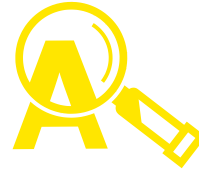
6. Project approach



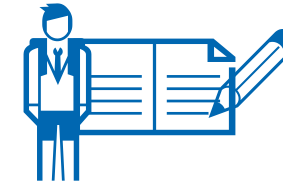
Project approach is an in-depth observation / investigation of a topic. This approach generally involves 3 phases,



Students and teacher **select and discuss a topic** to be explored through mind-map conceptual drawing and recording

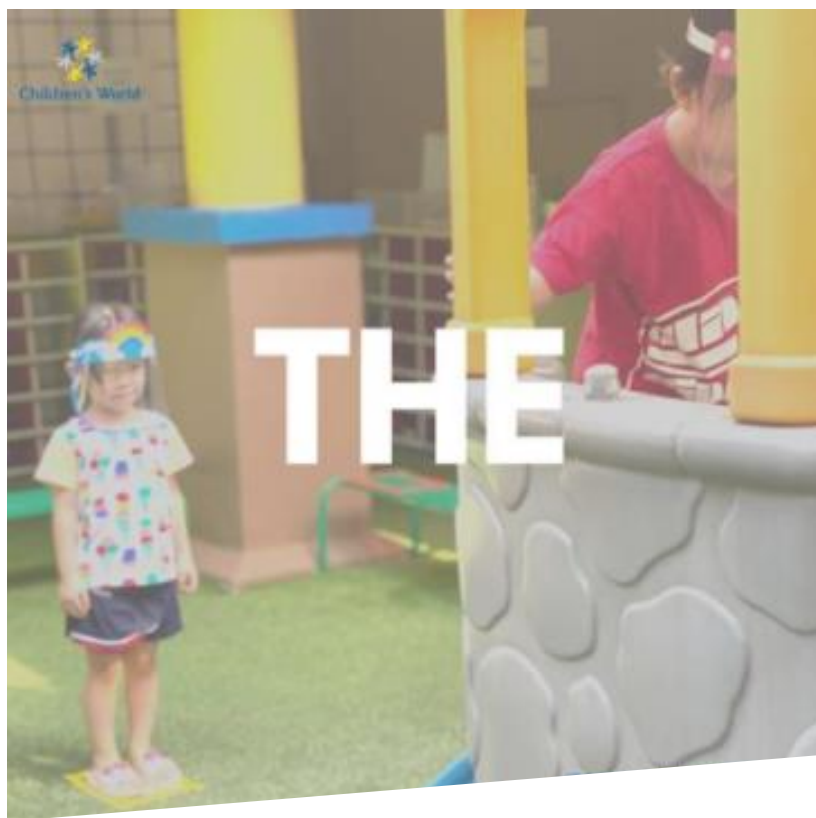


The student conducts **first-hand observation / investigation** and create representations of their findings



The student **presents** the culminates and debrief of the project

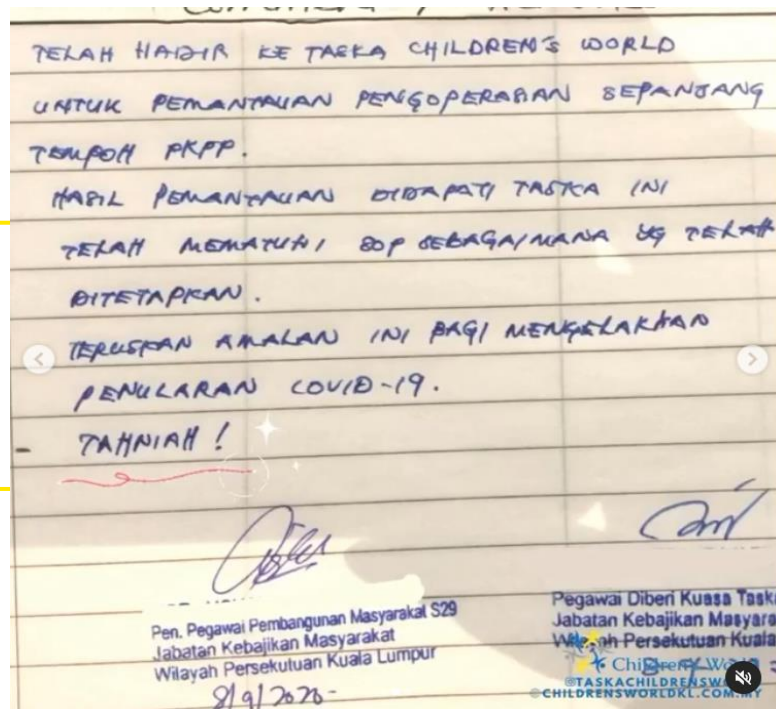




SOP measures

Recognition from the Authorities

The government officials have been visiting business premises to ensure that sufficient and appropriate Standard Operating Procedures (“SOP”) are adhered. The SOP practices in *Taska Children’s World* have been recognised and approved with a congratulatory message by the relevant authorities.



SOP measures in Taska Children's World

Besides thorough sanitisation and disinfection at least twice daily, some of the many SOP measures practised are as follow:





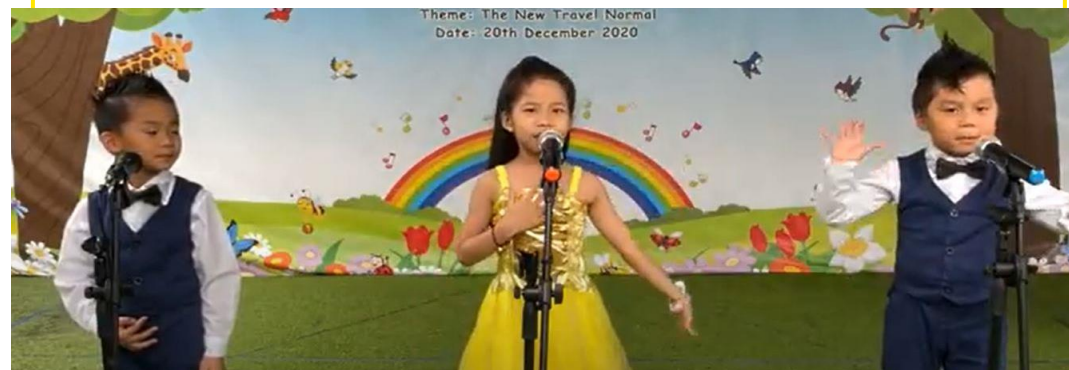
Special events

Special events

Family Sports Day



Concert dance, emcee and performances



Graduation ceremony and celebration

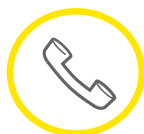




Contact us

Centre visit / Appointment booking

For more information, you may reach our principal
Mdm. Kok Hua Liang through the following :



+6 016 208 4439



childrenworldkl@yahoo.com



Taska Children's World

45, Jalan Wan Malini, Taman Sri Endah, Seri Petaling, 57000 Kuala Lumpur



www.childrensworldkl.com.my



TaskaChildrensWorld

